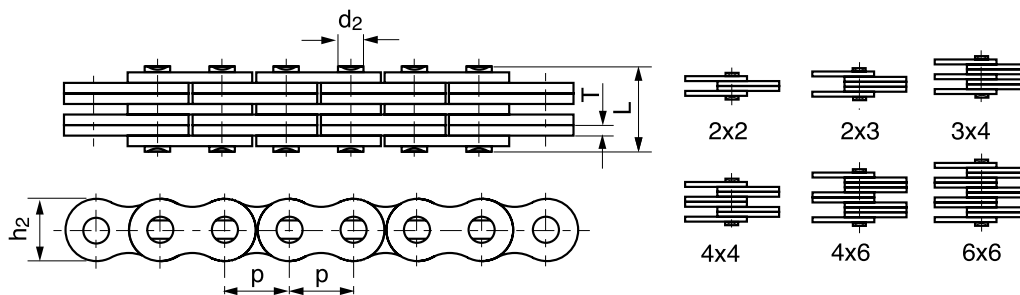


BL SERIES LEAF CHAINS

CHAIN LACING

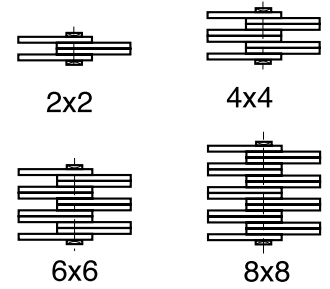


Product Code	ANSI Chain No	ISO Chain No	Pitch P mm	Chain Lacing	Plate Depth	Plate Thickness	Pin Diameter	Pin Length	Minimum Tensile Strength	Average Tensile Strength	Weight per Metre
					h2 max mm	T max mm	d2 max mm	L max mm	Q min kN	Q0 kN	q kg/m
431014060FEN	BL422	LH0822	12.700 1/2"	2x2	12.07	2.08	5.09	11.05	22.20	27.60	0.64
431014090FEN	BL423	LH0823		2x3				13.16	22.20	27.60	0.80
431014120FEN	BL434	LH0834		3x4				17.40	33.40	41.40	1.12
431014150FEN	BL444	LH0844		4x4				19.51	44.50	56.00	1.28
431014180FEN	BL446	LH0846		4x6				23.75	44.50	56.00	1.60
431014210FEN	BL466	LH0866		6x6				27.99	66.70	81.70	1.92
431014240FEN	BL522	LH1022	15.875 5/8"	2x2	15.09	2.44	5.96	12.90	33.40	43.10	0.88
431014270FEN	BL523	LH1023		2x3				15.37	33.40	43.10	1.10
431014300FEN	BL534	LH1034		3x4				20.32	48.90	65.60	1.50
431014330FEN	BL544	LH1044		4x4				22.78	66.70	84.50	1.80
431014360FEN	BL546	LH1046		4x6				27.74	66.70	84.50	2.20
431014390FEN	BL566	LH1066		6x6				32.69	100.10	125.10	2.65
431014420FEN	BL622	LH1222	19.050 3/4"	2x2	18.11	3.30	7.94	17.37	48.90	63.60	1.45
431014450FEN	BL623	LH1223		2x3				20.73	48.90	63.60	1.80
431014480FEN	BL634	LH1234		3x4				27.43	75.60	102.80	2.50
431014510FEN	BL644	LH1244		4x4				30.78	97.90	120.90	2.90
431014540FEN	BL646	LH1246		4x6				37.49	97.90	120.90	3.60
431014570FEN	BL666	LH1266		6x6				44.20	146.80	190.80	4.30
431014600FEN	BL822	LH1622	25.400 1"	2x2	24.13	4.09	9.54	21.34	84.50	108.20	2.20
431014630FEN	BL823	LH1623		2x3				25.48	84.50	108.20	2.70
431014660FEN	BL834	LH1634		3x4				33.76	129.00	170.00	3.80
431014690FEN	BL844	LH1644		4x4				37.90	169.00	214.60	4.30
431014720FEN	BL846	LH1646		4x6				46.18	169.00	214.60	5.40
431014750FEN	BL866	LH1666		6x6				54.46	253.60	324.50	6.50
431014780FEN	BL1022	LH2022	31.750 1.1/4"	2x2	30.18	4.90	11.11	25.37	115.60	150.80	3.40
431014810FEN	BL1023	LH2023		2x3				30.33	115.60	150.80	4.30
431014840FEN	BL1034	LH2034		3x4				40.23	182.40	231.60	6.00
431014870FEN	BL1044	LH2044		4x4				45.19	231.30	291.40	6.90
431014900FEN	BL1046	LH2046		4x6				55.09	231.30	291.40	8.60
431014930FEN	BL1066	LH2066		6x6				65.00	347.00	430.30	10.30
431014960FEN	BL1222	LH2422	38.100 1.1/2"	2x2	36.20	5.77	12.71	29.62	151.20	192.00	4.60
431014990FEN	BL1223	LH2423		2x3				35.43	151.20	192.00	5.80
431015020FEN	BL1234	LH2434		3x4				47.07	244.60	315.90	8.10
431015050FEN	BL1244	LH2444		4x4				52.88	302.50	381.10	9.30
431015080FEN	BL1246	LH2446		4x6				64.52	302.50	381.10	11.60
431015110FEN	BL1266	LH2466		6x6				76.15	453.70	543.60	13.90
431015140FEN	BL1422	LH2822	44.450 1.3/4"	2x2	42.24	6.55	14.29	33.55	191.30	225.70	6.10
431015170FEN	BL1423	LH2823		2x3				40.16	191.30	225.70	7.60
431015200FEN	BL1434	LH2834		3x4				53.37	315.80	372.60	10.60
431015230FEN	BL1444	LH2844		4x4				59.97	382.60	451.20	12.20
431015260FEN	BL1446	LH2846		4x6				73.18	382.60	451.20	15.20
431015290FEN	BL1466	LH2866		6x6				86.39	578.30	682.40	18.20
431015320FEN	BL1622	LH3222	50.800 2"	2x2	48.26	7.52	17.46	39.01	289.10	341.10	8.00
431015350FEN	BL1623	LH3223		2x3				46.58	289.10	341.10	10.00
431015380FEN	BL1634	LH3234		3x4				61.72	440.40	519.60	14.00
431015410FEN	BL1644	LH3244		4x4				69.29	578.30	680.40	16.00
431015440FEN	BL1646	LH3246		4x6				84.43	578.30	680.40	20.00
431015470FEN	BL1666	LH3266		6x6				99.57	857.40	1000.70	24.00

LL SERIES LEAF CHAINS

Product Code	ISO Chain No	Pitch P mm	Chain Lacing	Plate Depth	Plate Thickness	Pin Diameter	Pin Length	Minimum Tensile Strength	Average Tensile Strength	Weight per Metre
				h2 max mm	T max mm	d2 max mm	L max mm	Q min kN	Q ₀ kN	q kg/m
431016060FEN	LL0822	12,700 1/2"	2x2	10.60	1.30	4.45	7.60	17.80	20.40	0.35
431016090FEN	LL0844		4x4				13.00	31.10	35.70	0.69
431016120FEN	LL0866		6x6				18.20	44.50	50.90	1.00
431016150FEN	LL1022	15,875 5/8"	2x2	13.70	1.60	5.08	9.20	22.30	25.50	0.54
431016180FEN	LL1044		4x4				15.80	44.50	51.00	1.06
431016210FEN	LL1066		6x6				22.10	66.70	76.30	1.57
431016240FEN	LL1088		8x8				28.80	89.00	101.90	2.10
431016270FEN	LL1222	19,050 3/4"	2x2	16.00	1.85	5.72	10.40	28.90	33.20	0.73
431016300FEN	LL1244		4x4				17.90	57.80	66.40	1.44
431016330FEN	LL1266		6x6				25.40	86.70	99.70	2.15
431016360FEN	LL1288		8x8				32.90	115.60	132.90	2.84
431016390FEN	LL1622	25,400 1"	2X2	21.0	3.10	8.28	17.20	58.00	66.70	1.52
431016420FEN	LL1644		4X4				29.60	144.00	164.60	2.90
431016450FEN	LL1666		6X6				42.40	200.00	230.00	4.30
431016480FEN	LL1688		8X8				55.40	288.00	331.20	5.71
431016510FEN	LL2022	31,750 1.1/4"	2X2	26.40	3.70	10.19	20.10	95.00	109.20	2.33
431016540FEN	LL2044		4X4				33.80	190.00	218.50	4.40
431016570FEN	LL2066		6X6				50.10	285.00	324.60	6.79
431016600FEN	LL2088		8X8				65.40	380.00	435.10	8.75
431016630FEN	LL2422	38,100 1.1/2"	2X2	33.40	5.00	14.63	28.40	170.00	195.50	4.47
431016660FEN	LL2444		4X4				46.30	340.00	380.80	8.22
431016690FEN	LL2466		6X6				66.40	510.00	571.20	12.22
431016720FEN	LL2488		8X8				86.60	680.00	775.20	16.30
431016750FEN	LL2822	44,450 1.3/4"	2X2	37.08	6.00	15.90	32.20	200.00	224.00	5.10
431016780FEN	LL2844		4X4				56.40	400.00	448.00	9.90
431016810FEN	LL2866		6X6				80.60	600.00	672.00	14.60
431016840FEN	LL2888		8X8				105.20	800.00	896.00	19.40
431016870FEN	LL3222	50,800 2"	2X2	42.00	6.00	17.81	33.20	260.00	291.20	5.80
431016900FEN	LL3244		4X4				57.40	520.00	582.40	11.40
431016930FEN	LL3266		6X6				81.60	780.00	873.60	16.90
431016960FEN	LL3288		8X8				105.00	1050.00	1176.00	24.00
431016990FEN	LL4022	63,500 2.1/2"	2X2	52.76	8.25	22.89	44.70	360.00	703.20	10.30
431017020FEN	LL4044		4X4				77.90	780.00	873.60	20.00
431017050FEN	LL4066		6X6				111.10	1080.00	1209.60	29.50
431017080FEN	LL4088		8X8				145.50	1560.00	1747.20	39.10
431017110FEN	LL4822	76,200 3"	2X2	63.88	10.30	29.24	56.10	560.00	627.20	18.50
431017140FEN	LL4844		4X4				97.40	1120.00	1554.40	35.70
431017170FEN	LL4866		6X6				138.90	1168.00	1308.10	53.00
431017200FEN	LL4888		8X8				182.40	2240.00	2508.80	70.40

CHAIN LACING



AL SERIES LEAF CHAINS

Product Code	ANSI Chain No	Pitch P mm	Chain Lacing	Plate Depth	Plate Thickness	Pin Diameter	Pin Length	Minimum Tensile Strength	Average Tensile Strength	Weight per Metre
				h2 max mm	T max mm	d2 max mm	L max mm	Q min kN	Q ₀ kN	q kg/m
431018060FEN	AL322	9,525 3/8"	2X2	7.7	1.30	3.58	6.80	9.00	10.20	0.23
431018090FEN	AL422	12,700 1/2"	2X2	10.40	1.50	3.96	7.90	14.10	16.90	0.39
431018120FEN	AL444		4X4				14.40	28.20	35.20	0.74
431018150FEN	AL466		6X6				20.50	42.30	52.70	1.10
431018180FEN	AL522	15,875 5/8"	2X2	12.80	2.03	5.08	10.30	22.00	27.50	0.61
431018210FEN	AL534		3X4				17.00	33.00	46.00	1.10
431018240FEN	AL544		4X4				18.90	44.00	55.00	1.19
431018270FEN	AL566		6X6				26.90	66.00	82.50	1.79
431018300FEN	AL622	19,050 3/4"	2X2	15.60	2.42	5.94	12.40	37.00	44.40	0.86
431018330FEN	AL644		4X4				22.70	64.00	78.80	1.69
431018360FEN	AL666		6X6				32.40	101.00	118.60	2.52
431018390FEN	AL822	25,400 1"	2X2	20.50	3.25	7.92	16.00	56.70	68.60	1.54
431018420FEN	AL844		4X4				29.40	113.40	135.60	3.00
431018450FEN	AL866		6X6				42.50	170.00	202.30	4.46
431018480FEN	AL1022	31,750 1.1/4"	2X2	25.60	4.00	9.53	19.60	88.50	107.10	2.37
431018510FEN	AL1044		4X4				35.90	177.00	203.60	4.68
431018540FEN	AL1066		6X6				52.30	265.00	315.30	7.00
431018570FEN	AL1222	38,100 1.1/2"	2X2	30.50	4.80	11.10	24.30	127.00	151.10	3.65
431018600FEN	AL1244		4X4				43.80	254.00	299.70	7.05
431018630FEN	AL1266		6X6				63.00	381.00	426.30	10.44
431018660FEN	AL1444	44,450 1.3/4"	4X4	36.40	5.60	12.64	51.30	372.70	413.60	10.34
431018690FEN	AL1466		6X6				74.56	559.00	620.40	15.16
431018720FEN	AL1644	50,800 2"	4X4	41.60	6.40	14.21	58.06	471.00	522.80	12.98
431018750FEN	AL1666		6X6				84.46	706.00	783.60	19.41

CHAIN LACING

